

KAPLINLER

hidraka
Reliable and better.

www.hidraka.com

[REDACTED]	
[REDACTED]	
Weight	
PK001000066	0,25

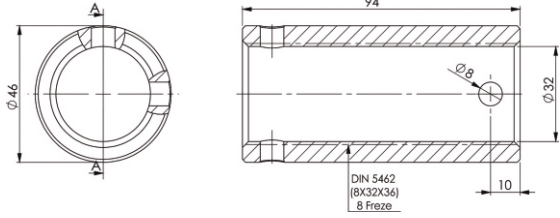
[REDACTED]	
[REDACTED]	
Weight	
PK000800068	0,5

[REDACTED]	
[REDACTED]	
Weight	
PK000100110	0,3

[REDACTED]	
6X6 SPLINED COUPLING (25x50)	
Weight	
PK000100050	0,5

[REDACTED]	
[REDACTED]	
Weight	
PK001200086	0,35

* (19X22X13T-21X25X5/6) COUPLING



INTERMEDIATE EXTENSION COUPLING (GEAR)

Ürün Kodu Ağırlık

Product Code Weight

Kg

PK000300094 0,54



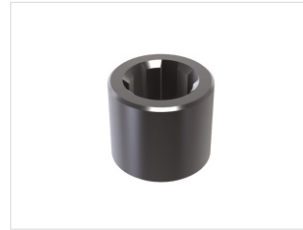
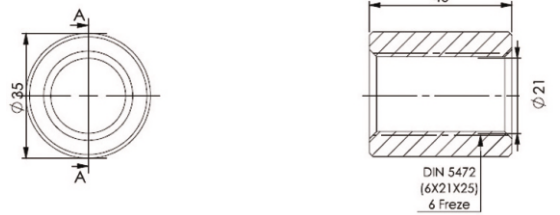
GEAR PUMP COUPLING WITH 6X6 SPLINE

Ürün Kodu Ağırlık

Product Code Weight

Kg

PK000100030 0,3



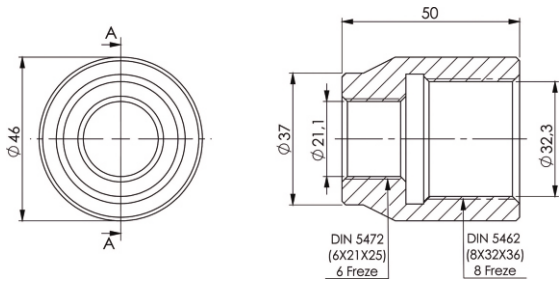
GEAR PUMP COUPLING WITH 6X6 SPLINE MEDIUM SIZE

Ürün Kodu Ağırlık

Product Code Weight

Kg

PK000100040 0,4



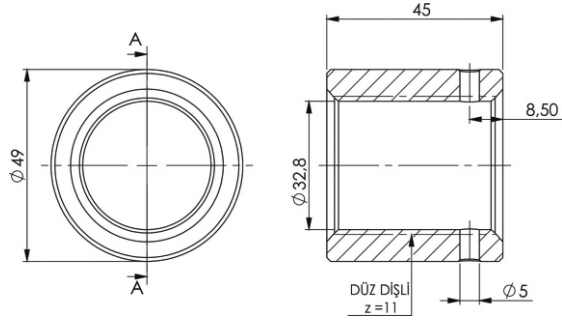
PISTON PUMP COUPLING WITH 6X8 SPLINE

Ürün Kodu Ağırlık

Product Code Weight

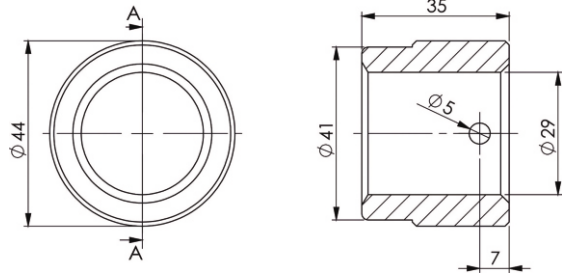
Kg

PK000400050 0,2



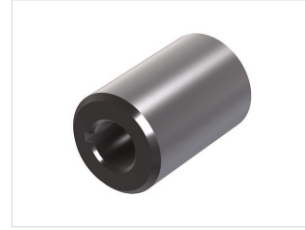
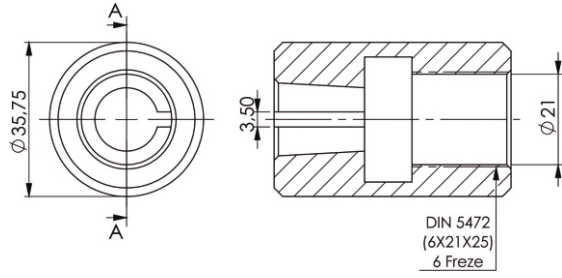
PTO FULLER 15G12-11612 COUPLING

Ürün Kodu	Ağırlık
Product Code	Weight
PK000700045	0,3



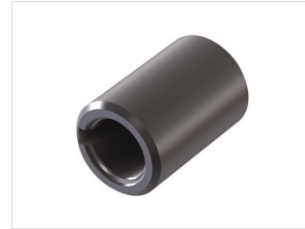
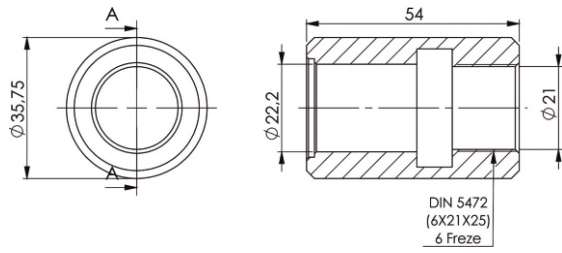
IVECO 28.95 COUPLING (BMC/FATIH)

Ürün Kodu	Ağırlık
Product Code	Weight
PK000700035	0,17



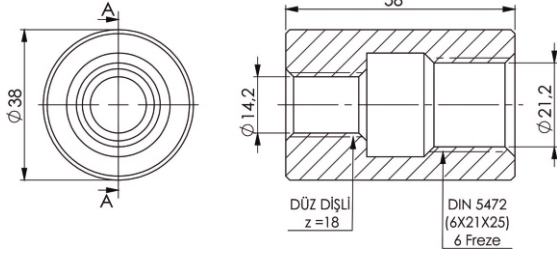
COUPLING WITH 6X1 SPLINE NARROW (HEMA)

Ürün Kodu	Ağırlık
Product Code	Weight
PK000500055	0,3



COUPLING WITH 6X1 SPLINE WIDE (HEMA)

Ürün Kodu	Ağırlık
Product Code	Weight
PK000600054	0,3

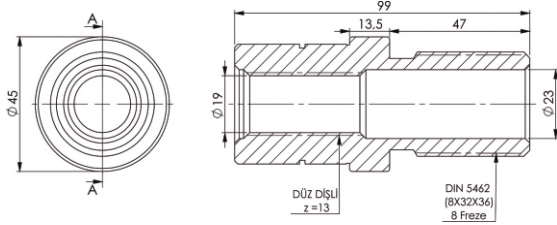


COUPLING WITH 6X10 SPLINE (HEMA)	
Ürün Kodu	Ağırlık
Product Code	Weight
	Kg
PK000500056	0,3



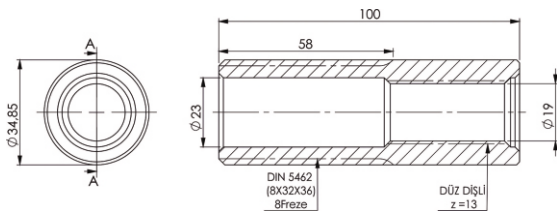
MRC ZF 5 S 110 (17 GEAR) COUPLING	
Ürün Kodu	Ağırlık
Product Code	Weight
	Kg
PK001400030	0,15

* (32X36X6/8-19X22X13T) COUPLING WITH 6008 BEARING



PTO ISO PUMP SAE B COUPLING	
Ürün Kodu	Ağırlık
Product Code	Weight
	Kg
PK001000100-R	0,4

* (32X36X6/8-19X22X13T) COUPLING WITH 6008 BEARING



PTO ISO PUMP SAE B COUPLING	
Ürün Kodu	Ağırlık
Product Code	Weight
	Kg
PK001000100	0,4

* (32X36X6/8-19X22X13T) COUPLING